

Présentation

Ref. 4022GK Meyrin

Magnificent village house built on a THPE (very high energy performance) plan in Meyrin, ideally located near public transport, schools, and all amenities.

Key Features:

- House designed on 3 levels, comprising 3 bedrooms, 6 elegantly appointed rooms, and a large basement.
- High-end finishes, including a custom kitchen.
- Bathrooms equipped with Hansgrohe fixtures and a sleek design.
- Solar panels for sustainable living.
- High energy performance with THPE (very high energy performance) certification.
- Prime location in a protected historic district.
- Preserved century-old linden tree in the garden.

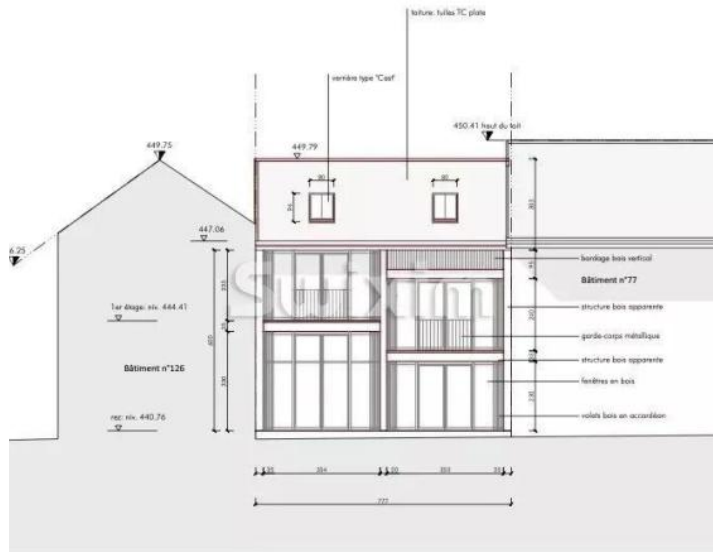
With a 12-month construction period, get ready to move into your dream home in the heart of Meyrin village center.

An opportunity not to be missed!

139.00 m²
Surface

6.00
Pièces

Galerie



Informations techniques

Transaction

Type	Maison/Villa
Disponibilité	À convenir

Surfaces

Pièces	6
Surface habitable	139 m ²
Surface du terrain	125 m ²

Bâtiment

Construction	2026
--------------	------
