

Appartement
Monaco

Superbe Penthouse Clé En Main Avec Terrasse Sur Le Toit De 150 M²

Chêne-Bougeries

Prix : Prix sur demande

Présentation

This luxurious penthouse, located on the second floor of the "IVY" Residence, offers an exclusive living experience with expansive spaces that open onto a large 150 sqm rooftop terrace. Designed with meticulous attention to detail, it includes four bedrooms, each with its own en-suite bathroom and dressing area, as well as a spacious laundry room.

Nestled in a serene environment, "IVY" Residence showcases neo-Victorian architecture inspired by the luxury boutiques of Rodeo Drive, complete with stone ornaments and elegant wrought ironwork. The two buildings are thoughtfully arranged to avoid direct views between units, and the entire property is designed to prioritize privacy and tranquility. With a south-facing orientation, the apartments enjoy optimal natural light throughout the day.

As a resident, you'll enjoy an array of world-class amenities, starting with the high-end indoor pool, hammam, and sauna, where every finish echoes the refinement of the world's finest palaces. For fitness enthusiasts, there is a fully equipped Technogym gym as well as a dedicated yoga and pilates studio with two reformers, offering everything you need for an active and balanced lifestyle without leaving home. Additionally, a permit is pending for the addition of an outdoor pool.

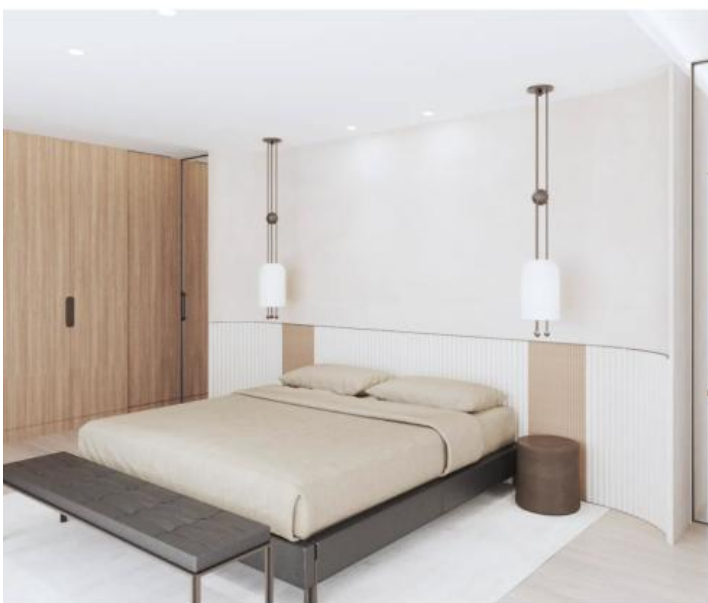
With THPE energy certification, Ivy also supports sustainable living, featuring 140 rooftop solar panels and battery storage systems to maximize energy efficiency. A comprehensive 24/7 security system ensures peace of mind, protecting both the grounds and the buildings with cutting-edge remote surveillance.

This penthouse at "IVY" Residence offers a rare blend of contemporary luxury, eco-conscious design, and privacy all in a tranquil, refined setting.

346.00 m²
Surface

4.00
Pièces

Galerie



Informations techniques

Transaction

Type	Appartement
Disponibilité	À convenir

Surfaces

Pièces	4
Salle de bain	4
Surface habitable	346 m ²
